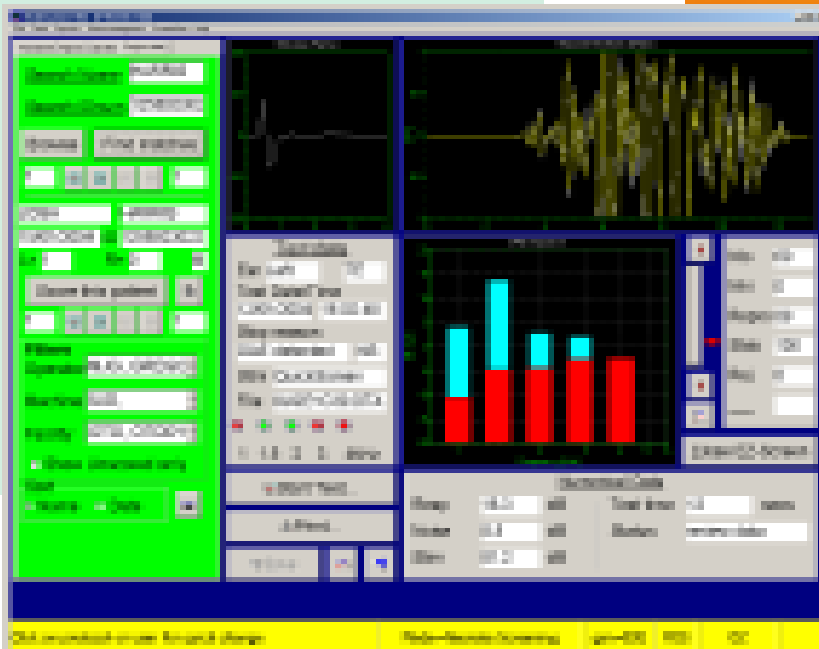
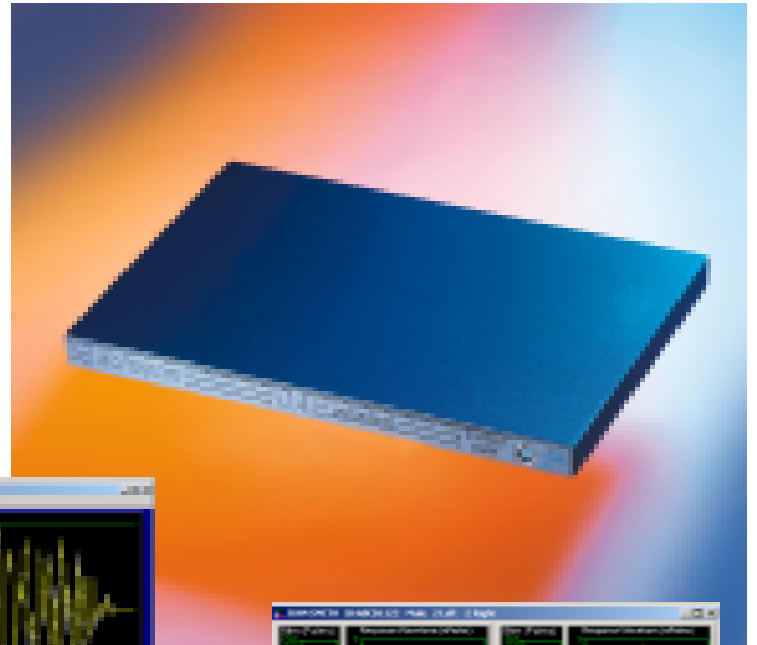


ILO288 USB for value and functionality

The OAE system
for screeners, clinics and
dispensing organizations



- ILO288 USB TE Screener
- ILO288 USB TE+DP Screener
- ILO288 USB TE+DP Clinical

Echoport **USB**

- ✓ The **sensitivity** of TEOAE
- ✓ The **range** of DPOAE
- ✓ The **continuity** of ILO data format
- ✓ The **convenience** of USB plug-n-play
- ✓ The **power** of EZ•SCREEN 2 with built-in patient database
- ✓ The **features** of a clinical OAE instrument
- ✓ The **confidence** that it's an Otodynamics Echoport



New and Improved Echoport

The Echoport USB format is super slim. There's no on-off switch, no battery. No power cord, no power supply unit.

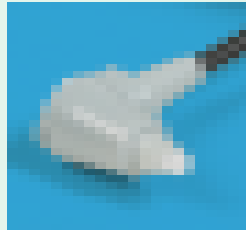


It connects to any laptop or desktop via the USB port. It's plug and play. No hassle to connect.

Supplied with comprehensive software, today's Echoport records identical OAE data to all previous ILO systems, so continuity with existing screening programs is assured. New programs will benefit from 16 years of OAE screening experience.

Completely Serviceable Probes

Otodynamics OAE probes are the most used and trusted. Easily disassembled and cleaned with replaceable protective coupler tubes and a wide range of disposable tips. You can choose between a TEOAE only or a TE+DP probe, each with a built-in calibration chip.



Total Flexibility

Echoports have never been more flexible. One hardware platform for screening and clinical applications. For maximum screening economy and proven sensitivity with the ultimate in expandability, choose either **Echoport ILO288 USB TE or ILO288 USB TE+DP**. For everyday clinical use, purchase the **Echoport ILO288 USB Clinical**.

Specifications

Dimensions: 297mm x 210mm x 18mm (11.75" x 8.25" x 0.75")
Weight: 1.05kg (2.3lb). Interface: USB 1.1 (compatible with USB 2.0)
Current consumption: 240mA during test, 40mA between test.
System capability: 2 channel 16bit ADC, 2 channel 16bit DAC.
Stimulation up to 95dB SPL.
PC requirements: Windows 98/ME/2000/XP. USB 1.1 or USB 2.0 port

Accessories

USB cable, UGS and UGD probes, test plug, test cavity, EZ-SCREEN software, manual. ILO clinical software is supplied with ILO288 clinical systems.

Classification

Type BF, Class II. Certified as meeting EN60601-1, UL2601, CSA 22.2 No. 601-1, CE, EMC. Otodynamics is an ISO 9001 compliant company.

ILO288 USB for Screening

Choose the ILO288 USB TEOAE Screener or the ILO288 USB TE+DPOAE Screener - bright, colourful and interactive displays, fully automated screening protocols and powerful data management facilities, built on a large capacity, extra-secure database system.

Easy access to screener functions

- User-switching from status panel
- Icon/button access to probe calibration routines
- Built-in probe calibration diary reminder
- Good visual indicators and on-screen reminders when switching between modes
- Enforced gender selection
- Option to enforce date of birth entry
- In-patient/Out-patient selection

Easy data and operational security

- Password protection at logon
- 2-level access permissions (Screener/ILO Administrator)

Easy import/export

- Streamlined data transfer from Otodynamics instruments
- Icon/button access to data download/import and transfers
- Go-at-your-own-pace handling of data from Echochecks
- Option to output user-identifiable files to OZ
- Match Hi*Track user IDs
- User-selectable range of output fields to an ASCII file
- Re-Export utility now built-in

ILO288 USB for the Clinic

The ILO288 USB Clinical instrument is supplied with ILO software, offering a suite of carefully engineered facilities scientifically proven to have value in audiology.

TEOAEs

- ILO Quick Screen TEOAE
- Standard ILO nonlinear recording,
- Settable stimulus intensity and preset stimulus waveforms
- Full ILO cross correlation, frequency analysis with reproducibility and signal to noise data
- Examine, compare feature for TE-TE and TE-DP records
- Response subtraction and merging Spontaneous OAE detection and analysis

DPOAEs

- DP-gram with preset and custom selected stimuli
- Programmable stimulus level, preset level and frequency ratio options, selectable points/octave, frequency range, manual/automatic/intelligent frequency progression
- DP component power assessment
- DPOAE growth analysis with programmable lookup table stimulus intensity

Database

- High capacity patient result database with extensive network and export facilities

Printout

- Informative color graphical and numerical printouts with the right balance of OAE graphics, half-octave summary and test validation data

Otodynamics Ltd

USA: 1-800-659-7776 UK: 01707 267540
International: +44 1707 267540 or Fax: +44 1707 262327
sales@otodynamics.com www.otodynamics.com
30-38 Beaconsfield Rd., Hatfield, Herts. AL10 8BB U.K.